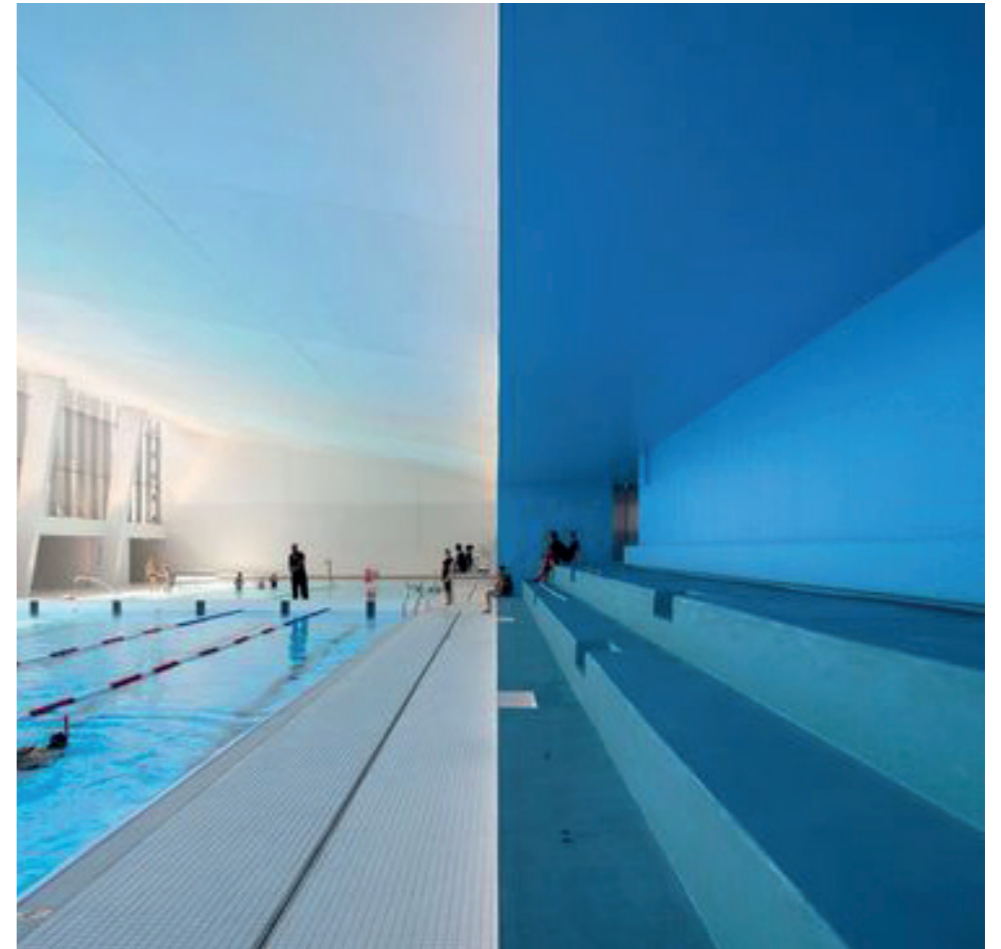


renovatie zwembad UT Enschede

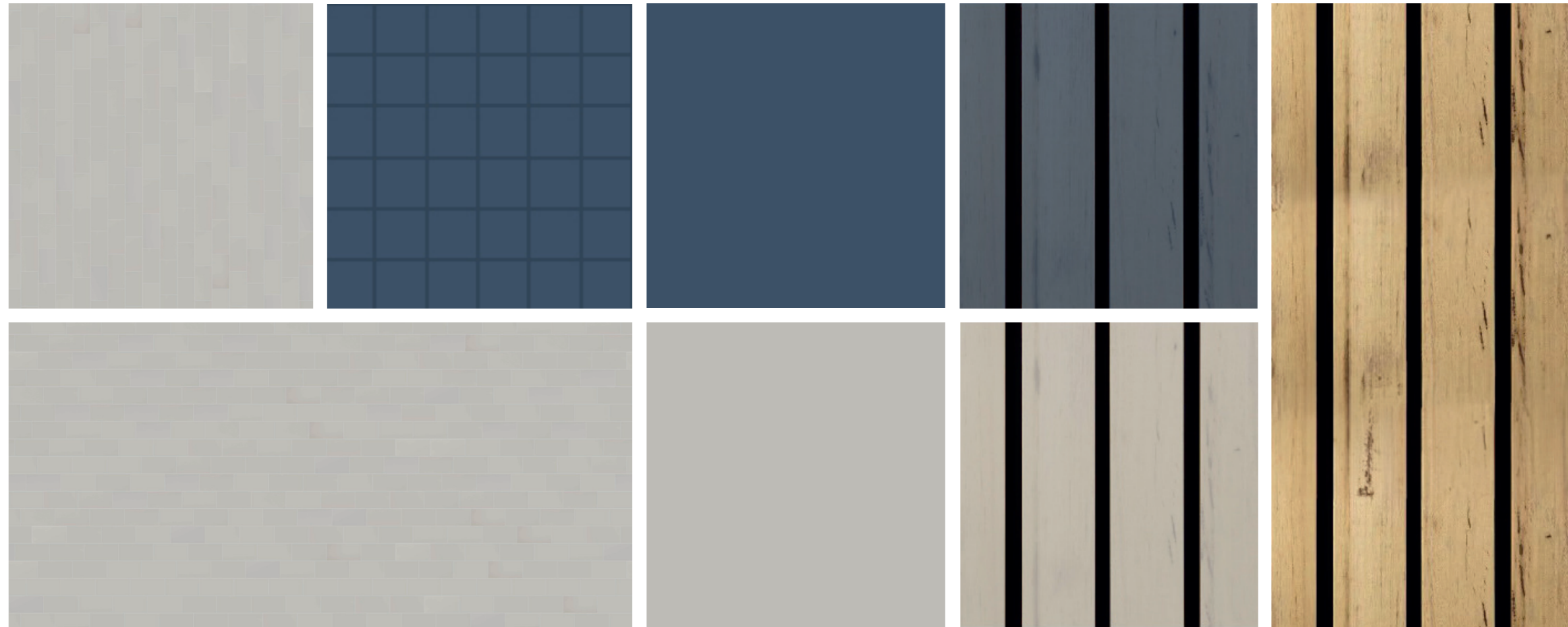
bestaande situatie



referentiebeelden



kleur- en materialen



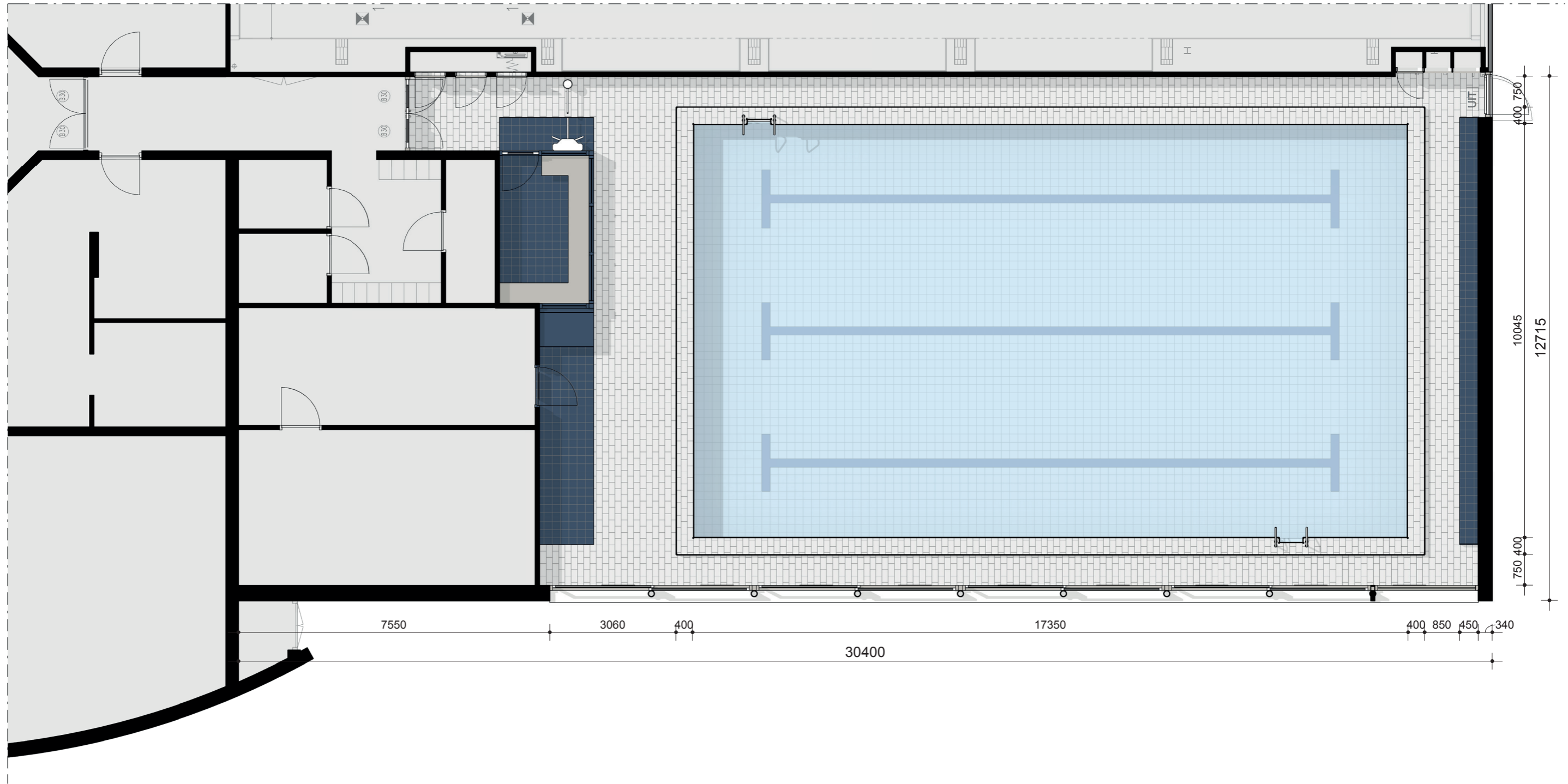
wand- en vloertegelwerk

kozijnen

houten plafonds

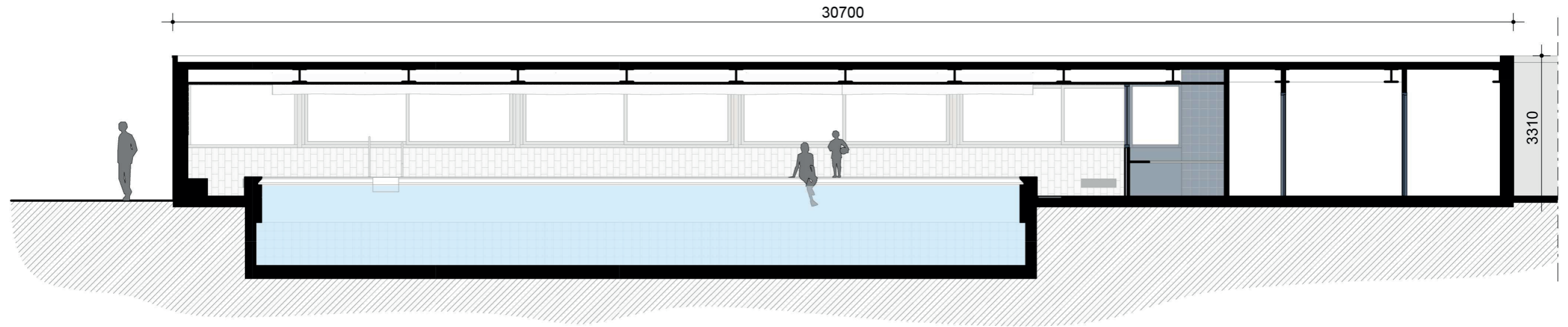
begane grond

1:100

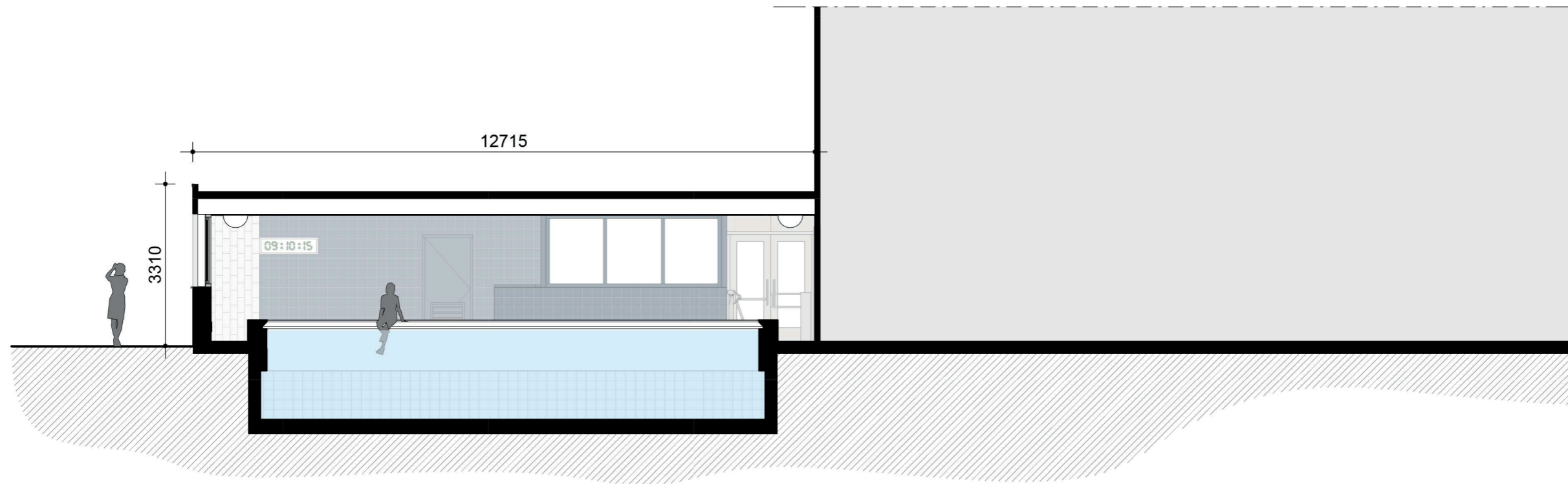


doorsneden

1:100



Doorsnede A



Doorsnede B

impressie #01



NO SWIMMING
EMERGENCY EXIT

UNIVERSITY OF TWENTE.





NOODUITGANG
EMERGENCY EXIT

UNIVERSITY OF TWENTE.



BM_α

Spinnerij Oosterveld, unit 2.14 - Rigtersbleek-Zandvoort 10 - 7521 BE Enschede
053 20 32 800 - www.beltmanarchitecten.nl - info@beltmanarchitecten.nl