

Making a Smart Bridge Transparent through Online Data Visualisation

Ilse Schieven

w.eggink@utwente.nl

Sensor Network



Cameras

Record where people are positioned on the bridge. Everyone is skeletonized to anonymize the data. Only a select amount of people will have access to the raw data.



Load cells

Helps measure the weight on the bridge. From this, the balance point of the bridge can be calculated



Thermistors

The sensors in the curls of the bridge measure the temperature of the surrounding area. The other thermistors measure the temperature in the chambers under the bridge.



Displacement sensors

Detect the amount of displacement at specific locations. Shows the change in length of the bridge due to temperature difference.



Accelerometers

Activity on the bridge causes it to vibrate. These vibrations are measured by the accelerometers.



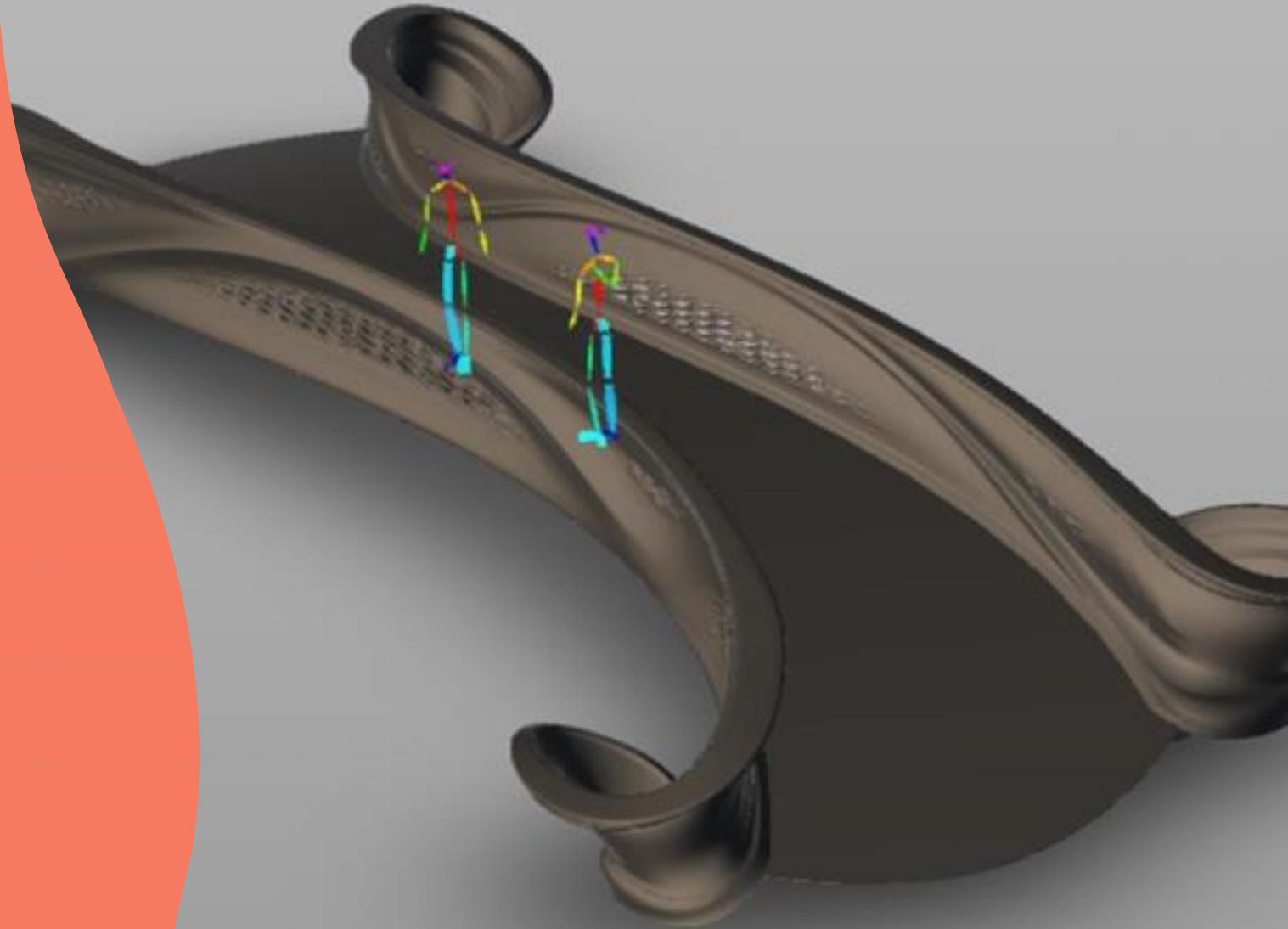
Strain gauges

Measure the deformation of the bridge on specific locations created by loads that are on it. These sensors can help pinpoint the location of loads (such as people) on the bridge.



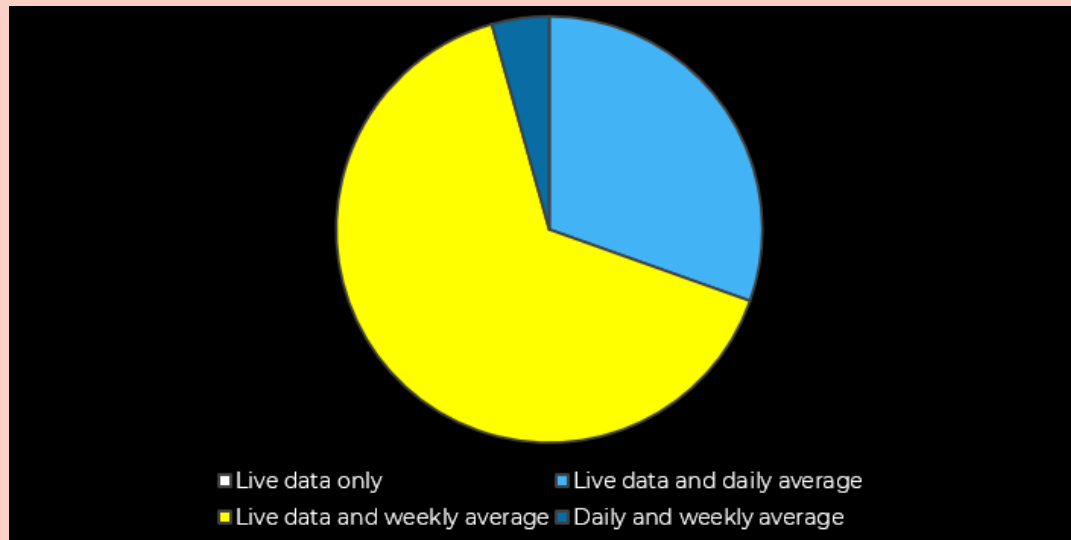
Inclinometers

Measure the rotations on the bridge caused by loads that are on it and changes in temperature.

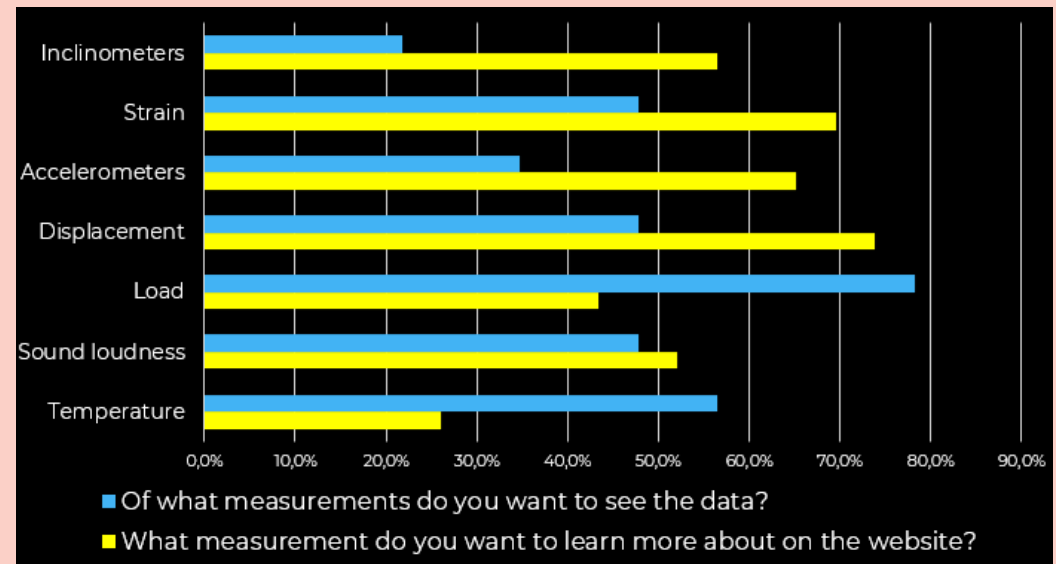


Research

“Would you like to see live measurements from the sensors, or also averages of previously measured data?”

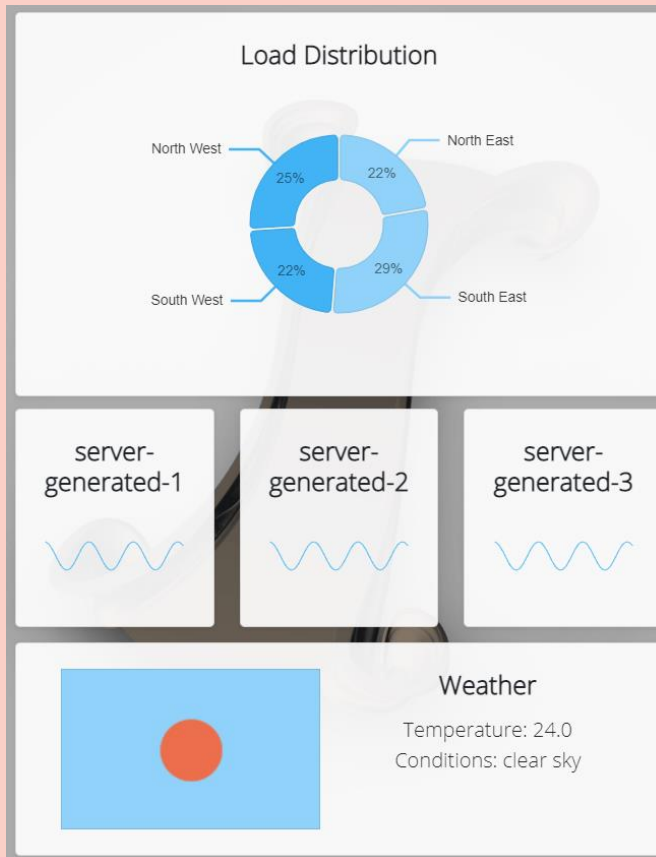


Live data measurements and Sensor information

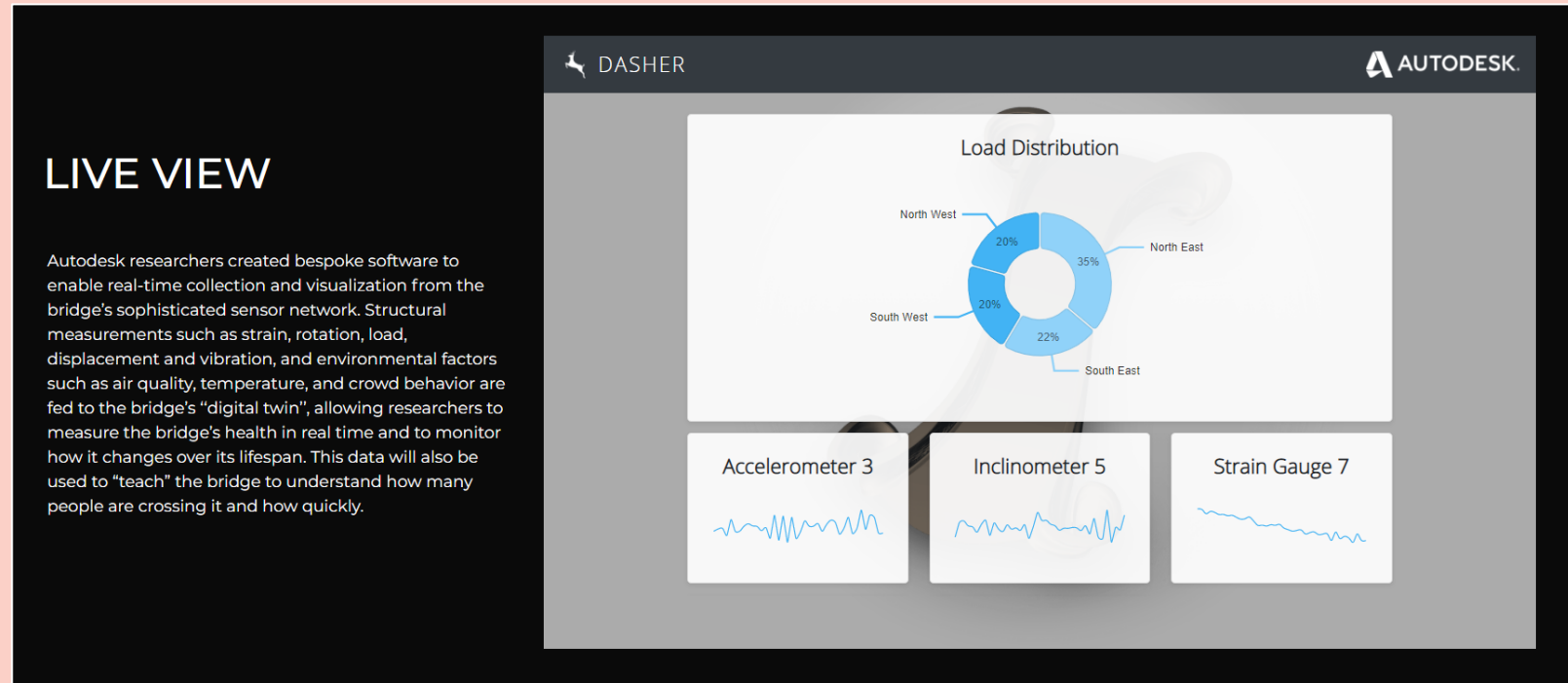


Design

My concept



The current website



Smartbridgeamsterdam.com