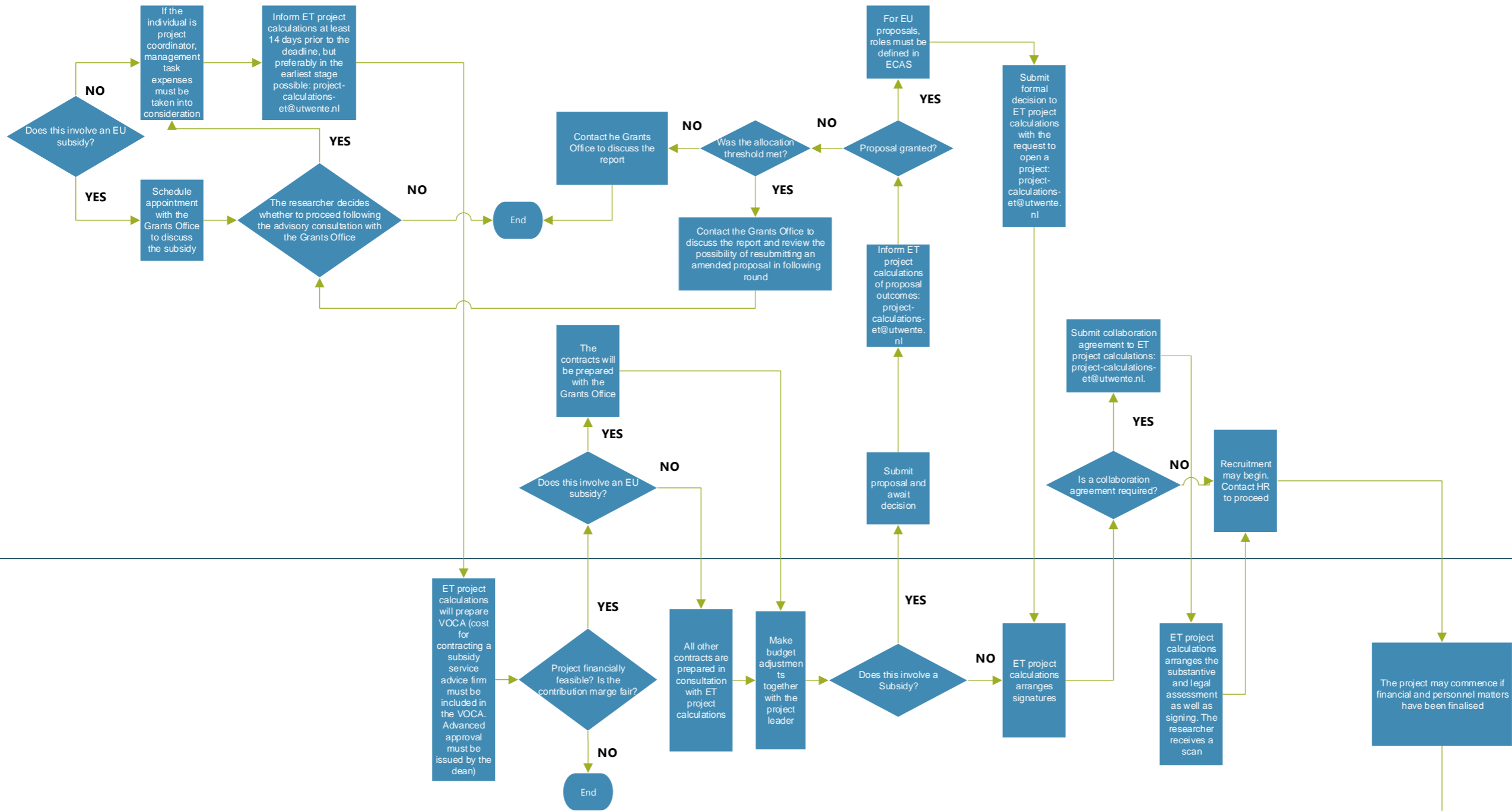


3rd money stream: funding from other parties national (province, RVO and municipalities), EU (Comenius, MC) and international: PLEASE CHECK THE LATEST VERSION ON THE INTRANET BEFORE YOU START USING THIS FLOW CHART

Project leader

ET Finance/ ET Project Calculations

Remarks



Remarks ET Finance:
 1. Adjustments during the project (both in personnel or budget) must be coordinated with ET Finance and ET HR.
 2. ET Finance will also communicate with regards to TAS (time registration).
 3. ET Finance provides budget overviews via Sharepoint for duration of the project.